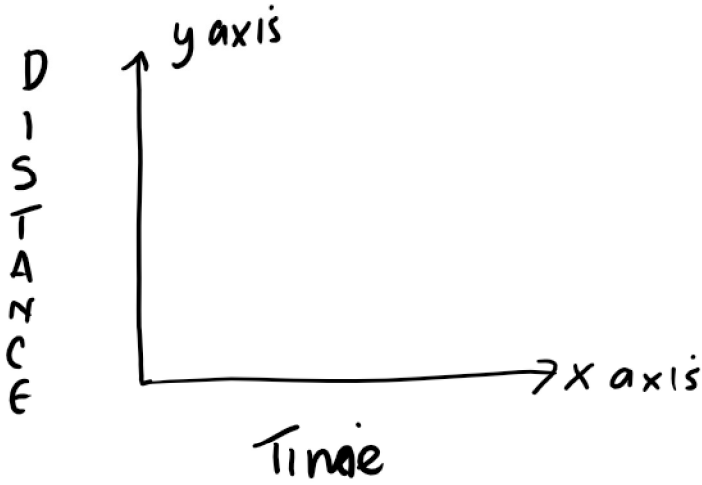
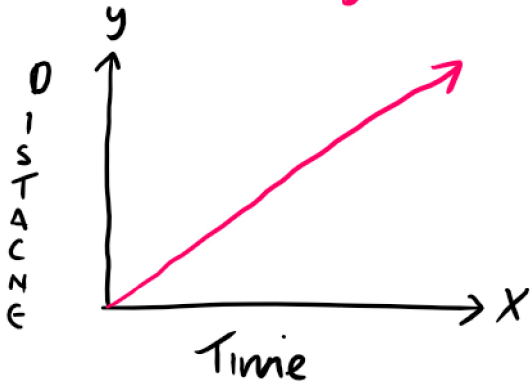


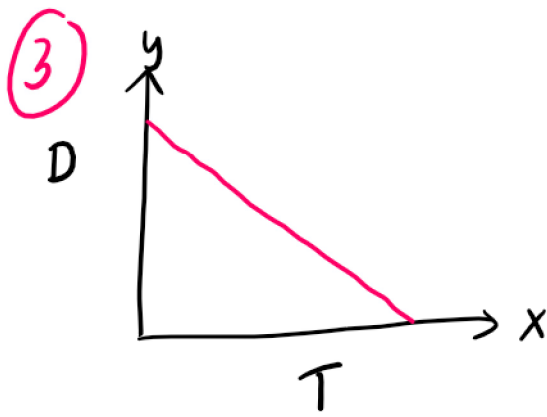
- ① The **variable** on the **x axis** is **time**
 The variable on the y axis is distance



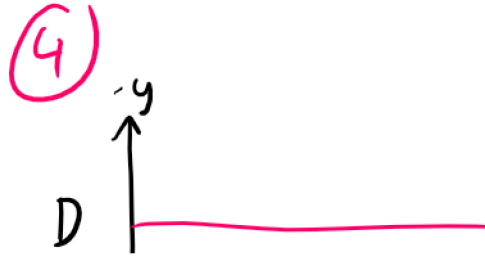
- ② When the speed is **constant** - the travel graph is a straight line



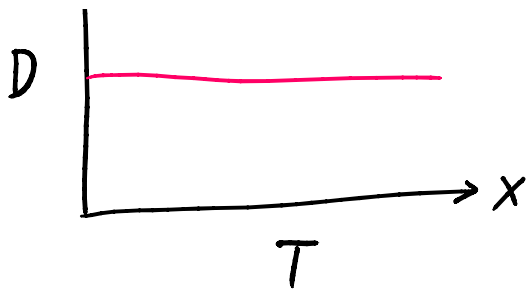
The object is moving away from a fixed point
 So the distance from the point is increasing so the slope of the line is positive



moving towards a fixed point
 the distance from the point is decreasing so the slope is negative.



If the distance from the point is staying constant as the time increases



part is staying constant
as the time increases
then the slope is 0, there
is no movement.