

# Speed Time Graphs

18 September 2019 10:28

x axis  $\longleftrightarrow$  represents "Time"

y axis  $\updownarrow$  represents "Speed"

When an object is travelling at a constant speed

the graph will show a horizontal line

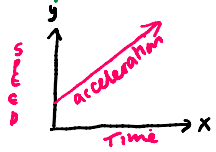
The line is parallel to the x axis, the slope is 0



When an object is increasing in speed (acceleration)

positive slope

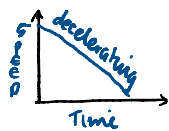
the line will be rising from left to right.



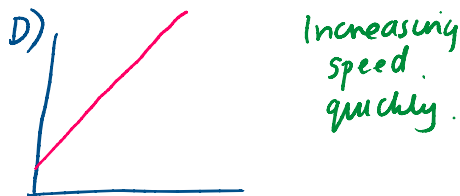
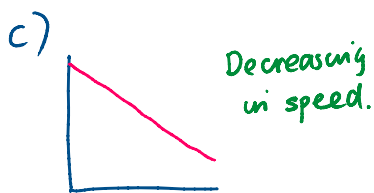
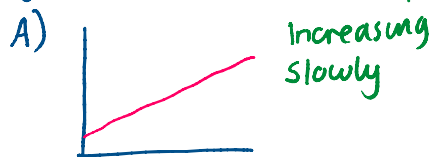
When an object is decreasing in speed (deceleration)

negative slope

the line is falling from left to right

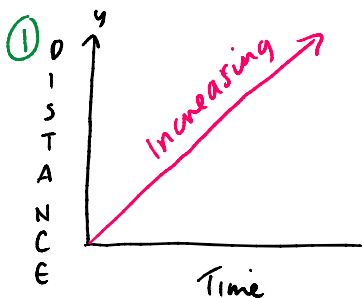


Eg1) Describe the motion of each of the graphs.

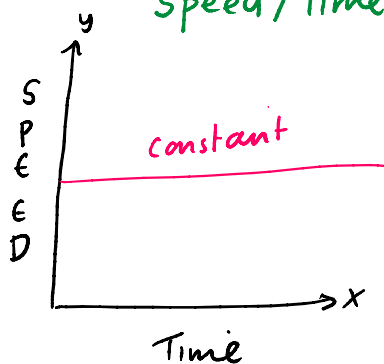


## Compare Graphs

Distance/Time



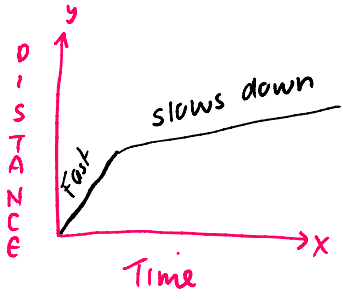
Speed/Time



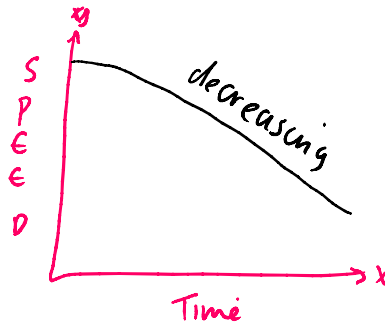
②

4/10

2



1



HW

new pg 465

Q7

OLD pg 401

Q7

3

