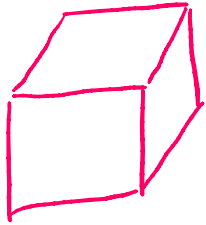


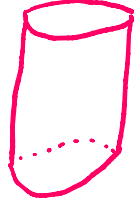
Real Life Graphs

23 September 2019 14:14

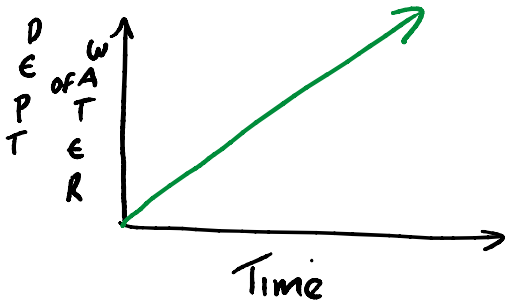
Filling a vessel/container can be graphed
Volume or Height time graphs.



OR

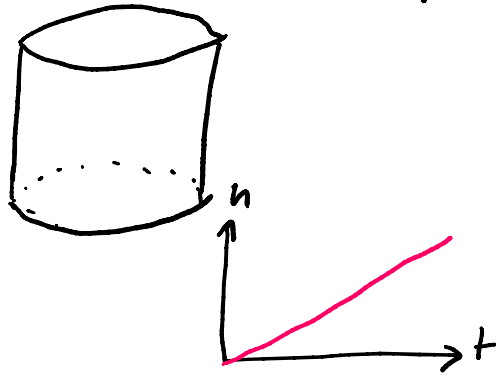
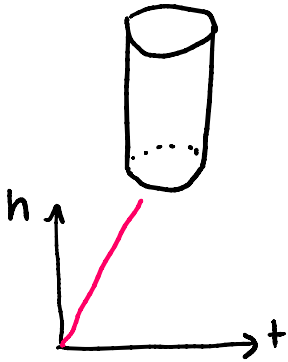


Liquid will flow
into these containers
at a steady rate



The graph is a straight line
because the water
rises at a constant rate.
The width is the same from
top to bottom

The thinner the container the faster it will fill up
Steeper line - Faster



Various Shaped Containers

