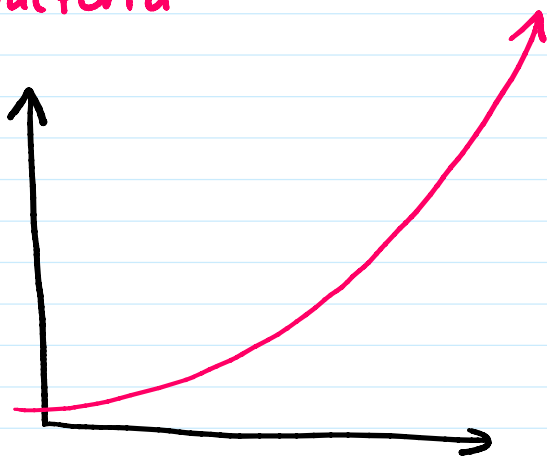
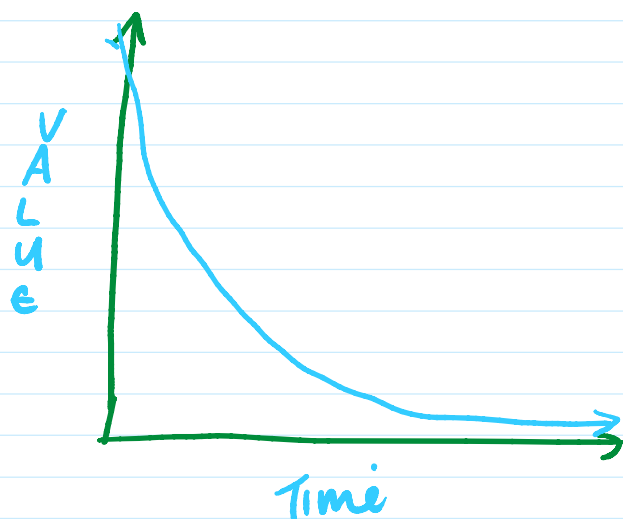


Population growth

Bacteria



Depreciation



In exponential functions the power is the variable

Eg $f(x) = 2^x$ or $f(x) = 3^x$

Remember $a^0 = 1$

Graph the function $f(x) = 3^x$ in the domain

$-2 \leq x \leq 3$

x	$f(x)$	(x, y)
-2	0.111	
-1	0.33	
0	1	
1	3	
2	9	
3	27	